



Dental Group

Innovative solutions



Worldwide leader in designing and manufacturing top quality compatible dental abutments

ipd was founded and originated in the dental sector, specializing in the manufacturing and marketing of PROSTHETIC ABUTMENTS for DENTAL IMPLANTS. Available in more than thirty countries, **ipd** offers a wide range of superior quality products, providing innovative solutions in the field of dental implants/prosthetics. **ipd** is now a global leader in compatible abutments.

Over
80
different implant
connections

Over
3,000
product references
at your disposal



Index

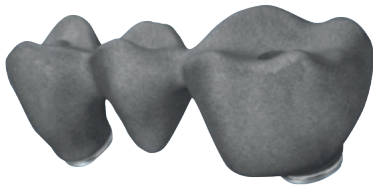
CAD CAM Solutions	04
Scan Abutment	06
Custom Interface Ti-base System	08
Multi-unit System	10
PSD System	12
TPA System	14
3D Digital Analog	16
Product Charts	18

CAD-CAM Solutions

IPD think digital



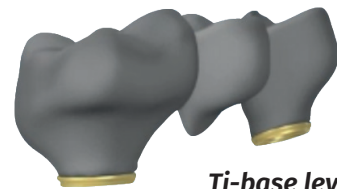
Ti-base level full contour



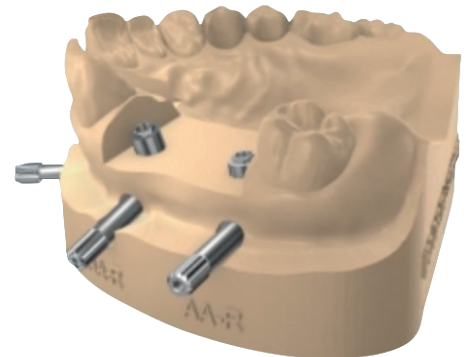
Implant level sinter-milled connection



Implant level milled connection



Ti-base level framework



Digital analog / 3D printed model

Our aim is to simplify and improve the most your digital workflow

by providing accurate solutions to your everyday digital challenges. We have developed and tested a full system to guarantee an accurate fully digital flow.

CAD-CAM Solutions

Implant level connection straight/angled screw channel (ASC)

Library file that allows to freely design any framework type at implant level, with both straight and angled screw channel.

Implant level sinter-milled connection straight/angled screw channel (ASC)

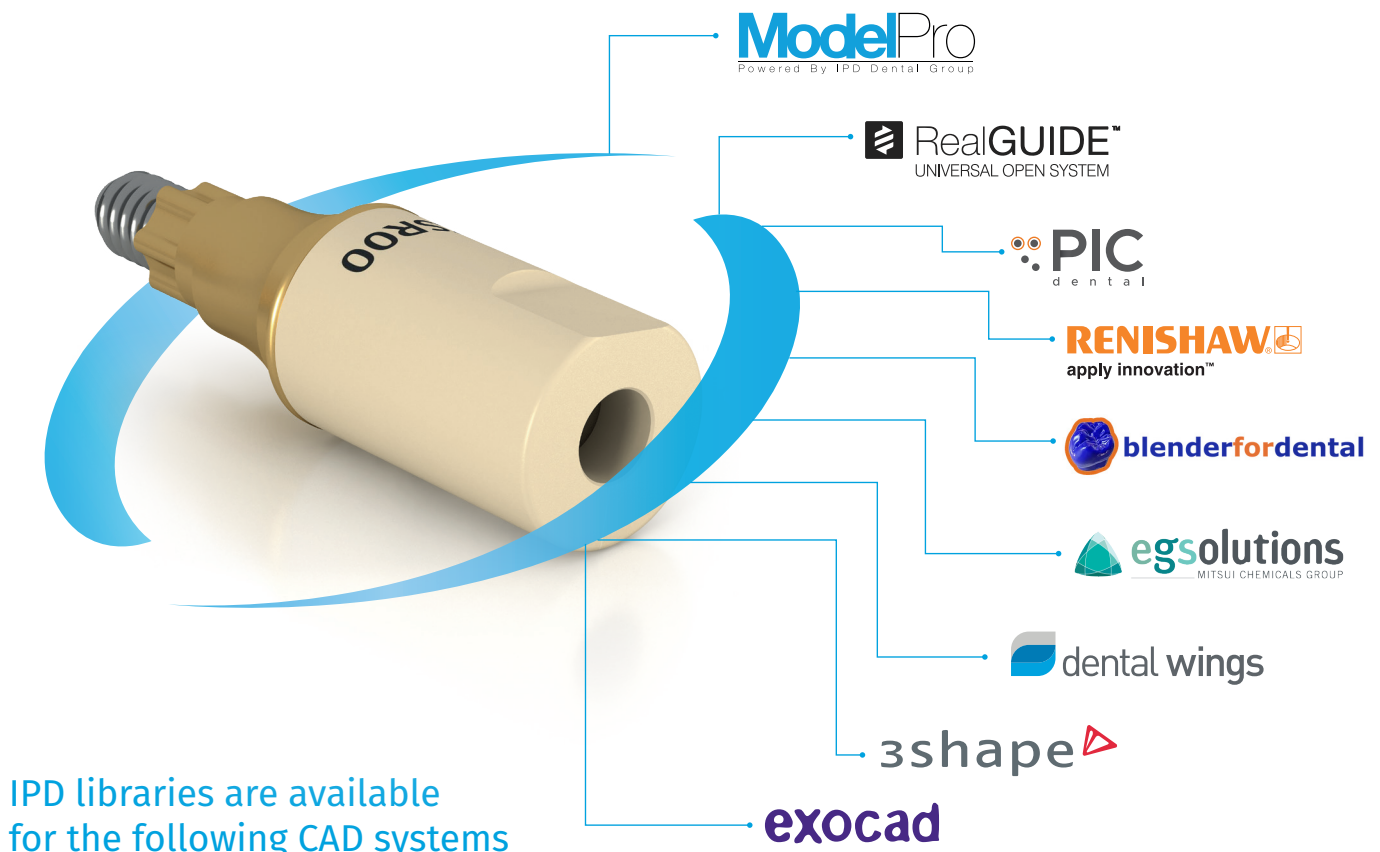
An innovative and cost-effective solution to produce implant level frameworks. This allows to manufacture high precision mechanized connections into a cost-effective sintered structure. Hybrid library consists into a two-phase system: Sintering and re-machining of the implant connection zone.

Ti-base level straight/angled screw channel (ASC)

Library file allowing the design of any type of prosthetic solution on top of the exclusive IPD Custom Ti-base to produce cemented-screw retained restorations. It's a versatile solution for intended use with aesthetic raw materials offering the most appropriate final result for each clinical case thanks to its flexibility as well as all supported options. For example, the two adjustment tolerances: A tighter and a looser one to support from ceramic to sintered CoCr or PMMA frameworks for example.

3D Digital Model

Through intraoral or Desktop scanning will allow to create high precision 3D models simplifying and facilitating the whole clinical and lab protocol. The full system has been developed to provide a stable, accurate and cost-effective solution.



Scan Abutment

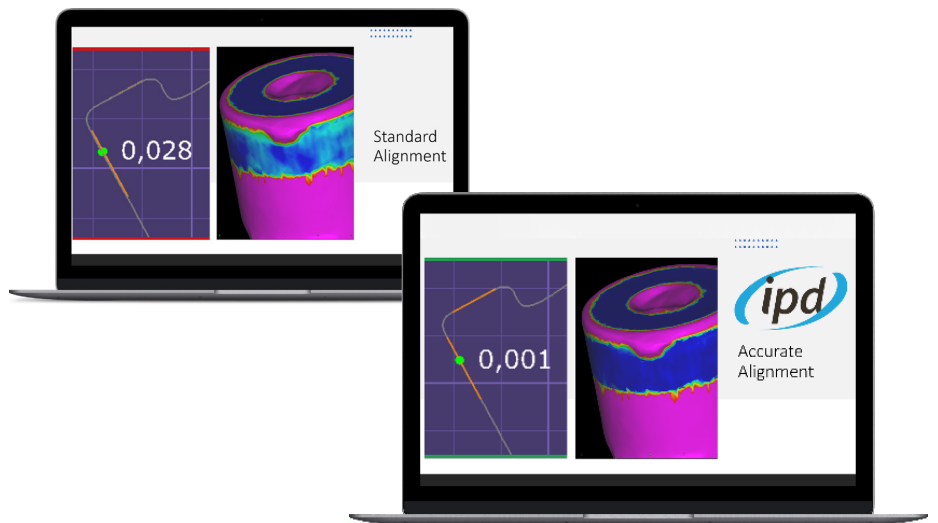
Accuracy, fit and reliability



One system, all solutions

Revolutionary high-precision Scan Abutment giving access to a fully integrated digital workflow.

A Scan Abutment suitable for both intraoral and desktop scanning devices enabling to perform implant level frameworks as well as giving access to our **Custom Interface Ti-base System** or the one-of-a-kind high precision 3D printed models.



CAD Alignment

IPD CAD libraries brings up to 7 different Scan Abutment tolerances to correctly adapt to the precision of each type of scanner on the market today.



Scan Abutment

- + Compatible with **intraoral systems** (clinical) and **desktop systems** (laboratory).
- + Also compatible with the **Renishaw® Tactile Probe System**.
- + **It Includes a captive screw** to prevent loss and make it easier to mount.
- + **The TiN coating** offers antibacterial properties to protect the gingiva.
- + **The Titanium base** ensures a long-lasting connection and enables the use of Rx.
- + The top section is made of **PEEK**, a polymer that favours implant reading and location.
- + **Maximum Z-precision** as it always rests on the sagittal plane of the implant or analog.
- + **A tolerance of ± 5 microns** throughout the entire manufacturing process.
- + Reference engraved by **laser etching**.
- + **2 heights for engaging versions:** 10 mm for most cases and 15 mm for situations involving a submerged implant.

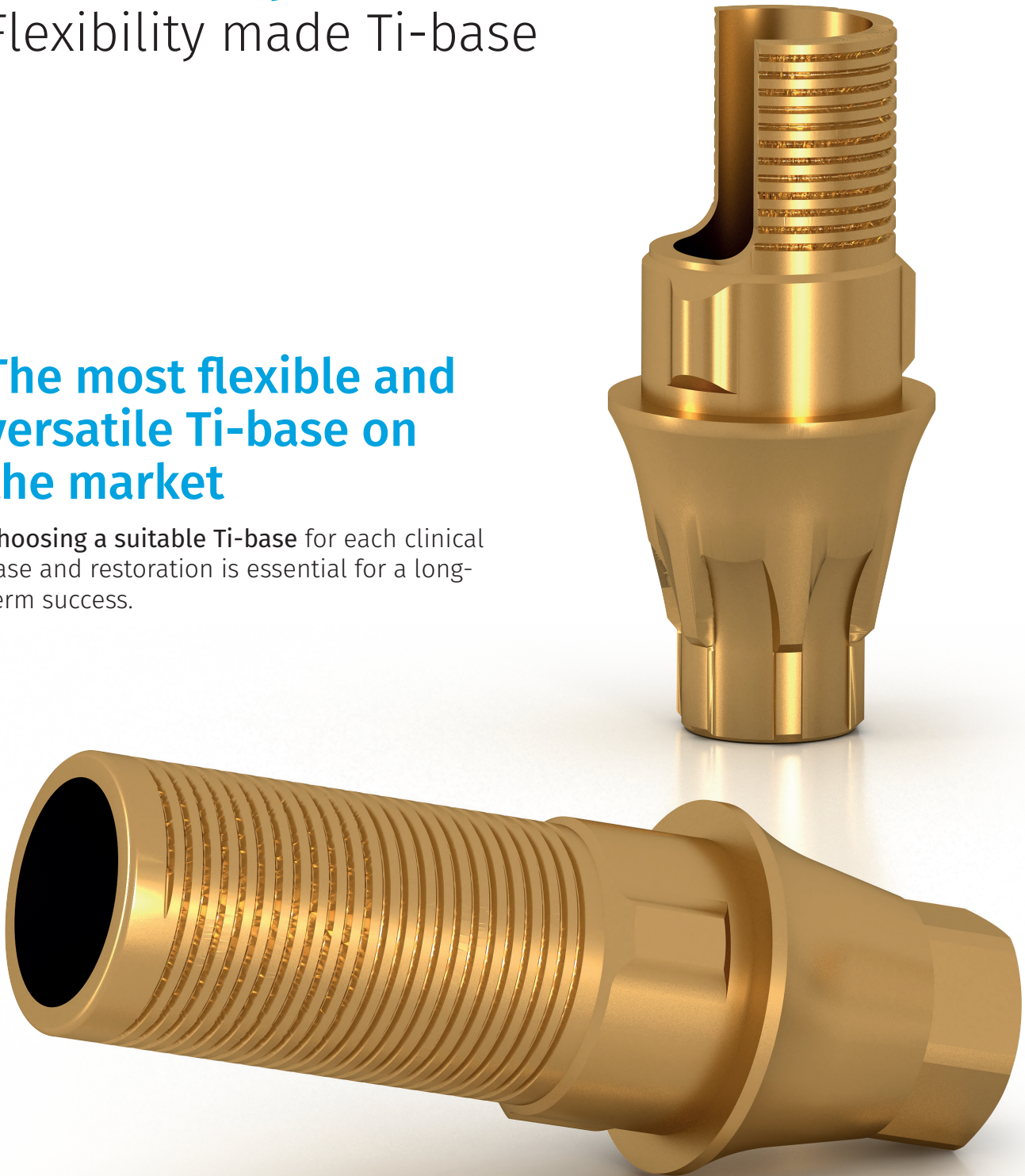


Custom Interface Ti-base system

Flexibility made Ti-base

The most flexible and versatile Ti-base on the market

Choosing a suitable Ti-base for each clinical case and restoration is essential for a long-term success.

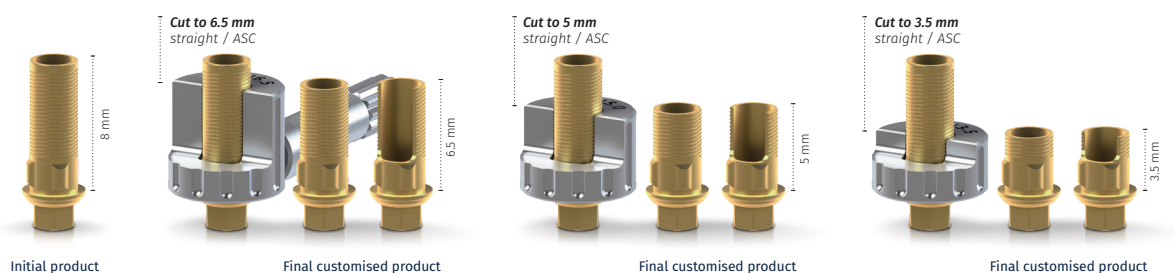


Custom Interface Ti-base system

Get to know its innovative design

- + New asymmetrical tri-lobe engaging design.
- + Easier to mill geometry.
- + **Helical spiral** grooves for improved retention.
- + Larger surface area for the prosthetic restoration to avoid insufficient thickness depending on the materials used.
- + **Three different Ti-Base platforms:** Narrow, Regular, and Wide. The emergence profile will accordingly grow from implant to prosthetic restoration.
- + **Adjustable height:** With 8 mm as standard for the engaging versions and 6.5 mm for non-engaging.
- + The recess for the Angled Screw Channel (ASC) can be adjusted for both engaging and non-engaging. *Check availability according to implant system.*
- + CAD-CAM libraries are available for all possible variations.
- + Different **gingival heights** for up to 3.5 mm.
- + Cutting guides with fixing screw facilitate cutting and trimming.

Engaging Ti-Base



Non-engaging Ti-Base



Multi-unit System

Aesthetic and precision

Exceeding expectations

The Multi-unit system has evolved to offer better features and new functionalities.

Find out everything that the Multi-unit system can do to improve your workflow.





Multi-unit System

Straight Multi-unit for one-piece abutments

All IPD straight Multi-unit abutments have been modified to incorporate an engaging design that is adaptable to one-piece abutments. Thanks to this new functionality, all straight Multi-units can be used to solve cases which require from a single crown restoration.

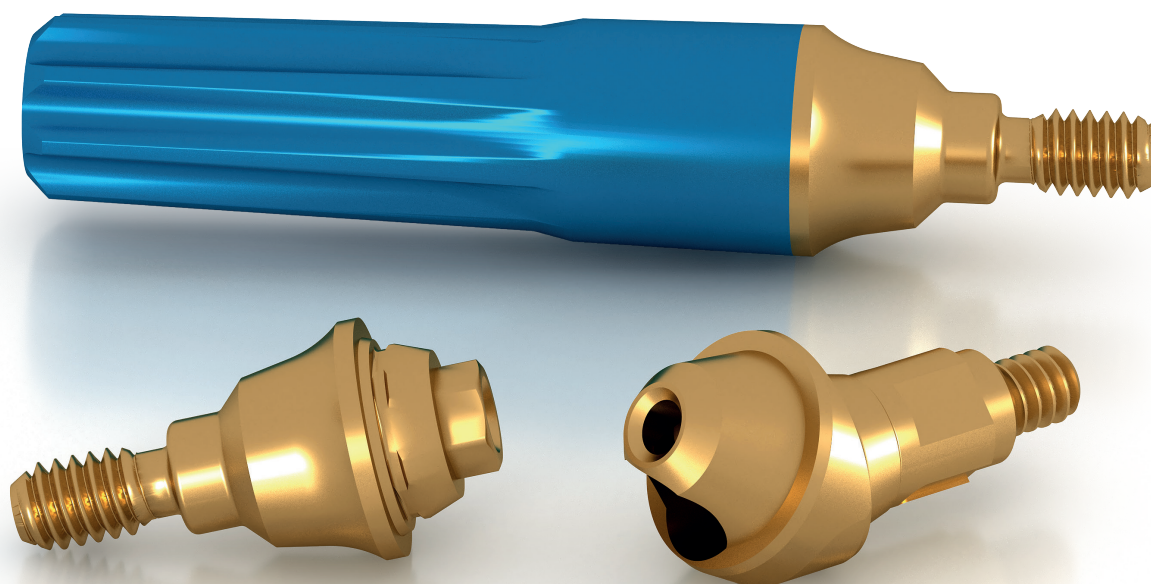
The corresponding prosthetic components fulfil this new functionality in order to work either analogy or digitally. This morphology change does not affect the usual Multi-unit procedures.

TiN Coating

IPD Multi-unit abutments are coated with Titanium Nitride (TiN). This coating enhances the aesthetics of the abutment with a gold colour. This visually improves cases where patients have exposure of the transmucosal abutment, and the case is compromised. It also provides antibacterial properties that prevents from plaque adhesion and help on saving from soft tissue inflammation.

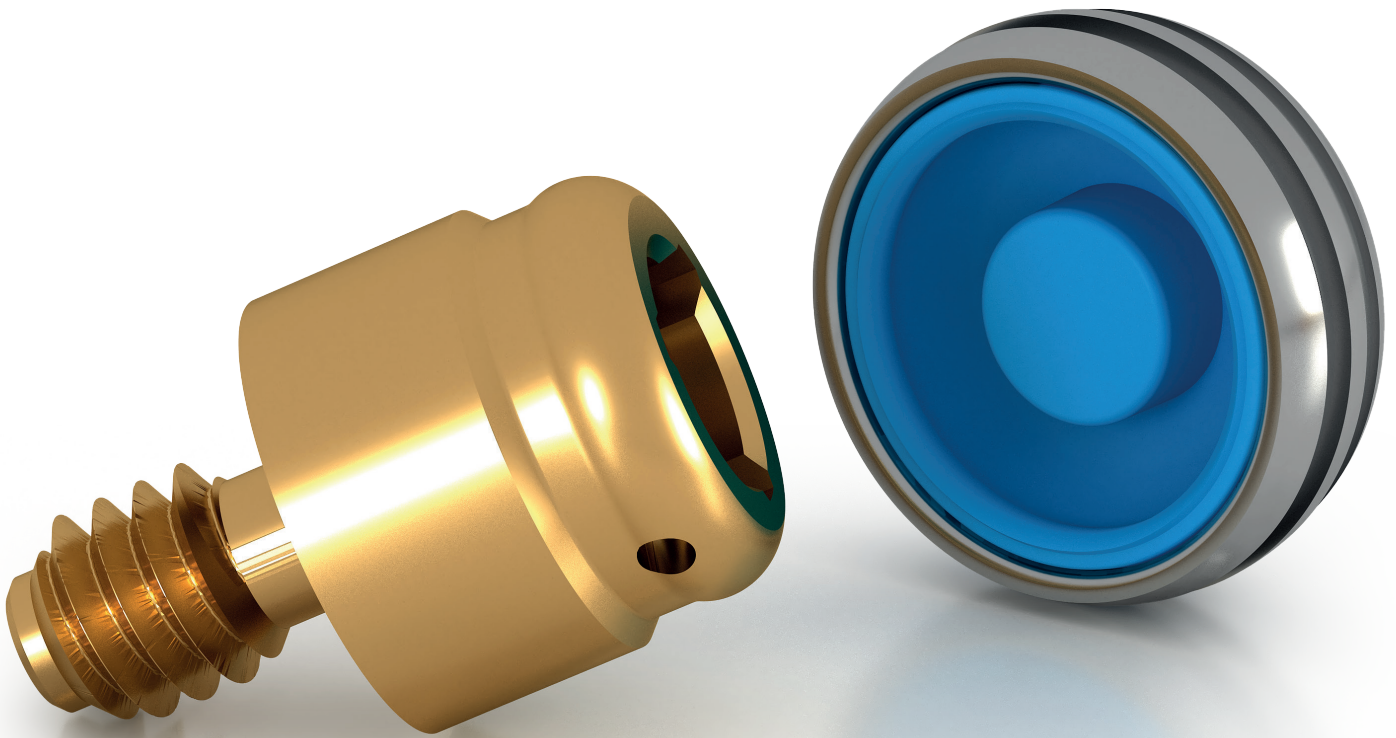
Carrier

Every order for a straight or angled Multi-unit comes with a carrier free of charge.



PSD System

Locator[®] Compatible



Attachment system for overdenture prosthetics

Low profile attachments are the natural evolution of the classic ball attachment.



PSD System

Small improvements make big differences

Fully compatible with the Locator® system will bring you the chance to improve without changing.

The two PSD available retention set will be enabling to save up to 40° divergence levels between implants. Each set will be including the relevant three retention level sleeves. The reduced coronal geometry of the PSD anchor reduces the necessary vertical dimension improving not only aesthetics but prosthetic resistance.

TiN Coating

The TiN coating improves periodontal aesthetics whilst reducing friction level getting into less wear for abutment and retention.

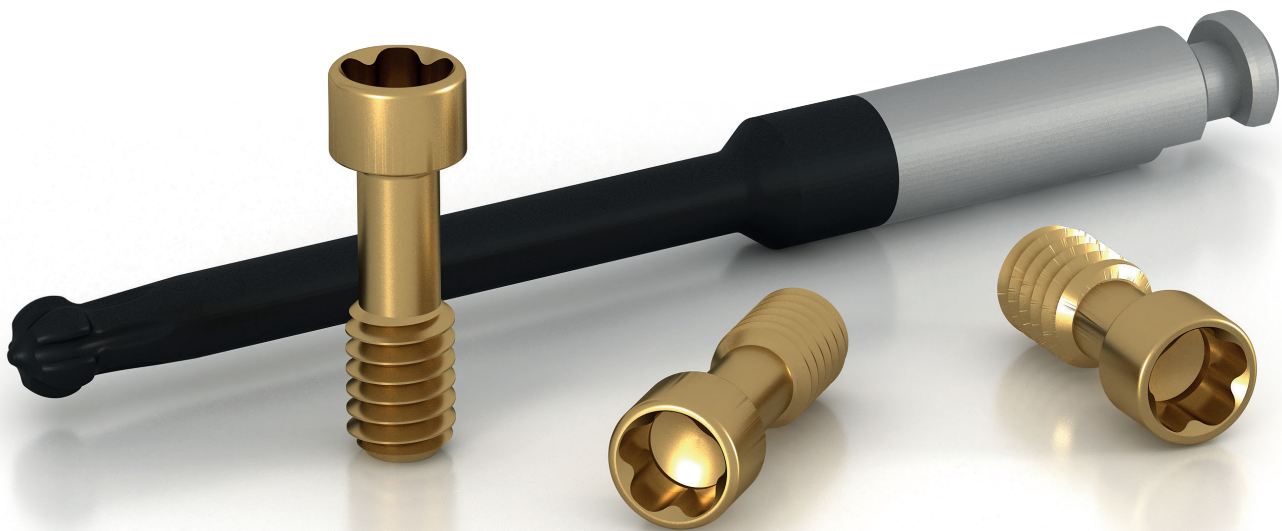


TPA System

The strength of TPA

Higher performance on torque transmission

TPA is our unique system developed to properly support all Angled Screw Channel Solutions (ASC). Its penta-lobe head design enables to solve compromised aesthetics clinical cases due to non-convenient implant placements.





TPA Screw

The penta-lobe head

Socked offers a more stable grip guaranteeing the full torque transmission as well as saving from suffering deformations.

TPA Screw tip

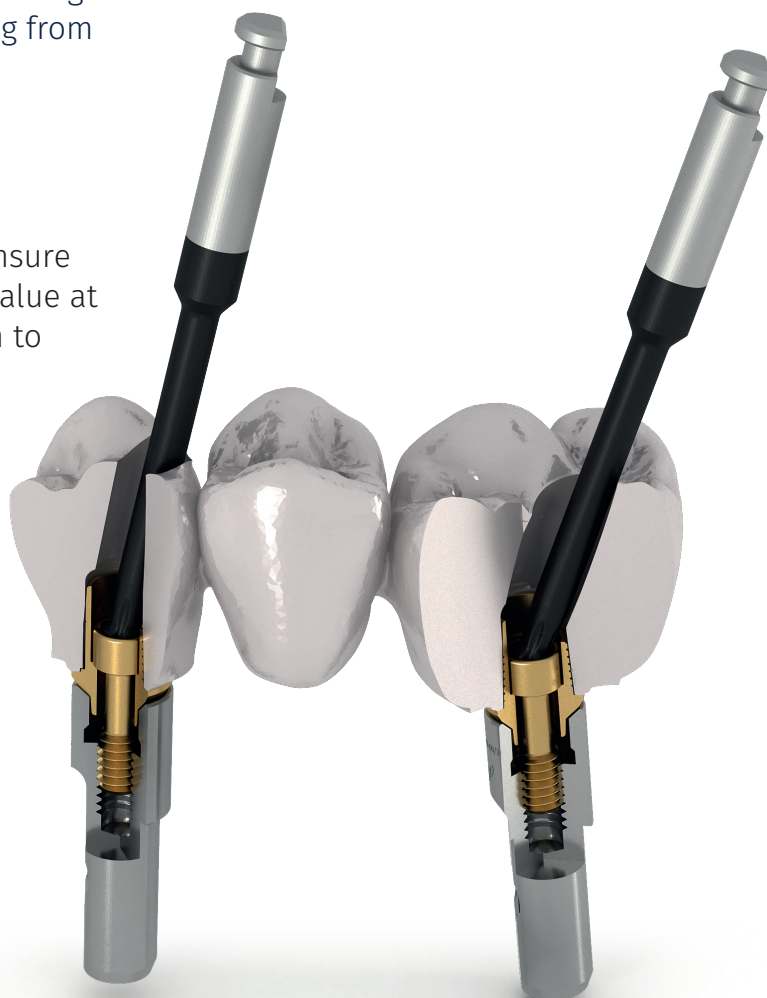
The penta-lobe elliptical tip

Offers the most appropriate design to ensure an efficient transmission of the torque value at all angles. The unique design has shown to increase fracture resistance up to 9.7%.

DLC coating improves tip hardness up to 2,500 Vickers whilst offering a lower friction coefficient saving from jamming. Available into three different total lengths to support all clinical cases: 18, 25 and 32 mm.

Compatible with all IPD Angled Screw Channel solutions

TPA system will be in force whether running into a implant level or Ti-base level framework as well as IPD CoCr bases on its standard or CAD supported versions.



Digital Analog

The most stable
and precise



3D printing accuracy and reliability

The innovative design of the Digital Analog, with two fixation screws, ensures the exact positioning of the digital analog in a 3D printed model. The two fixation screws ensure that the Analog is in the correct position, with one located laterally and the other positioned at the bottom of the 3D printed model. The lateral screw also allows the use of articulator without loss of the bite register.

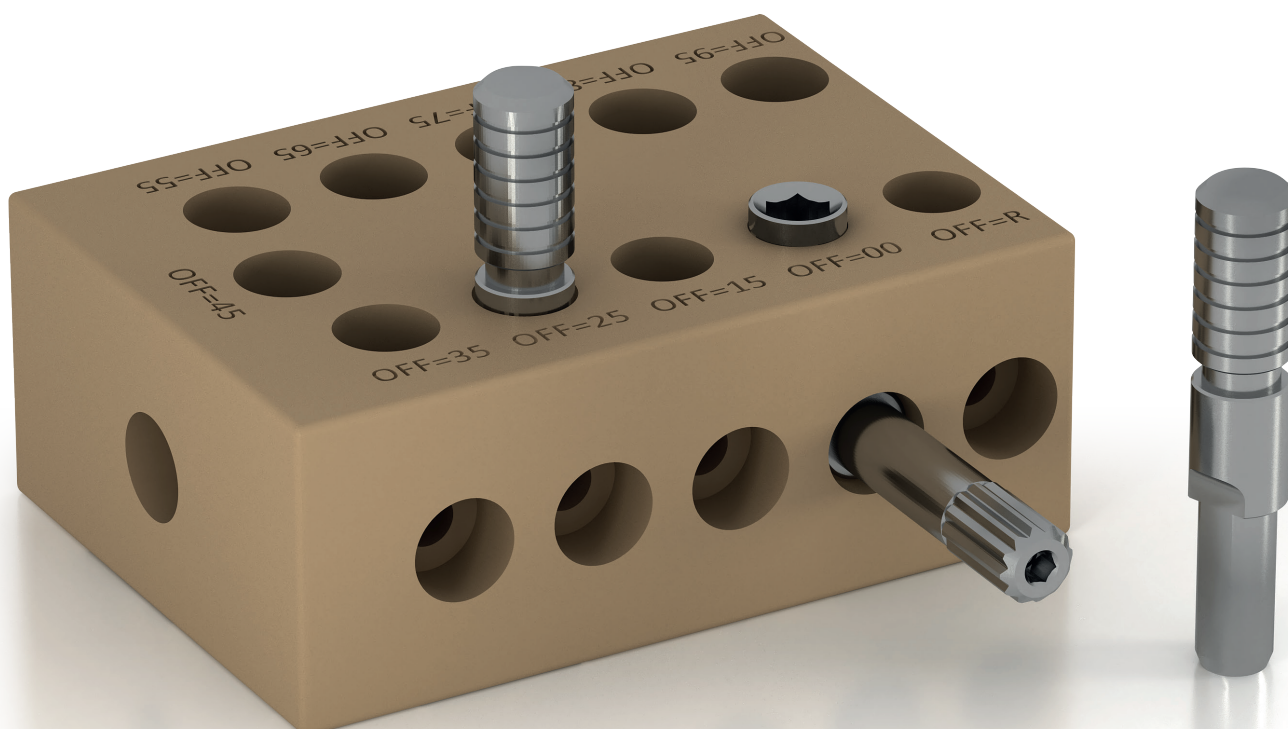


Digital Analog

Validation master

IPD provides a master STL file to allow final customer checking their printing device resolution. At the same time, a pretend 3D analog will be provided free of charge to allow testing the adjustment on the printed calibration master in a convenient, simple and fast way.

Once acknowledge this value customer will have access to a customised CAD library with optimised parameters. There are existing up to 11 different CAD library files to ensure making it suitable to efficiently work with any 3D printing system.



		SCAN ABUTMENT			ENGAGING CUSTOM TI-BASE				NON-ENGAGING CUSTOM TI-BASE			
		Engaging 10 mm	Engaging 15 mm	Non-Engaging 10 mm	0-1 mm	1-2 mm	2-3 mm	3-4 mm	0-1 mm	1-2 mm	2-3 mm	3-4 mm
AA	BRANEMARK®											
	Ø 3.5	•	•	•		•				•		
	Ø 4.1	•	•	•	•	•	•		•	•	•	
	Ø 5.1	•	•	•		•				•		
AC	REPLACE® SELECT											
	Ø 3.5	•	•	•	•	•			•	•		
	Ø 4.3	•	•	•	•	•			•	•		
	Ø 5.0	•	•	•	•	•			•	•		
AD	NOBEL ACTIVE®											
	Ø 3.0	•	•	•	•	•	•		•	•	•	
	Ø 3.5	•	•	•	•	•	•	•	•	•	•	•
	Ø 4.3	•	•	•	•	•	•		•	•	•	•
BA	OSSEOTITE™											
	Ø 3.4	•	•	•		•				•		
	Ø 4.1	•	•	•	•	•	•		•	•	•	
	Ø 5.0	•	•	•	•	•			•	•		
BB	CERTAIN®											
	Ø 3.4	•	•	•	•	•	•		•	•	•	
	Ø 4.1	•	•	•	•	•			•	•		
	Ø 5.0	•	•	•	•	•			•	•		
CA	SK2-NK2											
	Ø 4.2	•		•			•				•	
CB	ESSENTIAL CONE®											
	Ø 4.5	•	•	•	•				•			
CC	KL™											
	Ø 3.5	•	•	•		•				•		
	Ø 4.1	•	•	•	•	•	•		•	•	•	
	Ø 5.1	•	•	•		•				•		
CD	VEGA®											
	Ø 3.5	•	•	•	•	•	•		•	•	•	
	Ø 4.0	•	•	•	•	•	•		•	•	•	
	Ø 4.5	•	•	•	•	•	•		•	•	•	
DA	TISSUE LEVEL											
	Ø 4.8	•	•	•	•				•			
	Ø 6.5	•		•	•				•			
DB	BONE LEVEL											
	Ø 3.3 NC	•	•	•	•	•	•	•	•	•	•	•
	Ø 4.1 RC	•	•	•	•	•	•	•	•	•	•	•
DC	BLX®											
	RB/WB	•	•	•	•	•	•			•	•	•
EA	OSSEOSPEED™											
	Ø 3.0	•	•	•	•	•	•		•	•	•	
	Ø 3.5/4.0	•	•	•	•	•	•	•	•	•	•	•
	Ø 4.5/5.0	•	•	•	•	•			•	•	•	•
EB	EVOLUTION®											
	Ø 3.6	•	•	•	•	•	•		•	•	•	
	Ø 4.2	•	•	•	•	•	•		•	•	•	
FA	SCREW VENT®											
	Ø 3.5	•	•	•	•	•	•		•	•	•	
	Ø 4.5	•	•	•	•	•	•		•	•	•	
	Ø 5.7	•	•	•	•				•			
FB	SWISSPLUS®											
	Ø 4.8	•	•	•	•				•			
FC	EZTETIC®											
	Ø 3.1	•	•	•	•	•	•		•	•	•	
GA	BTI® EXTERNAL											
	Ø 3.5	•	•	•		•				•		
	Ø 4.1	•	•	•	•	•	•		•	•	•	
	Ø 5.5											
GB	INTERNAL UNIVERSAL®											
	Ø 4.1	•	•	•	•	•	•		•	•	•	
	Ø 5.5											
GC	MULTI-IM®											
	Ø 4.1			•					•			

STRAIGHT MULTI-UNIT					17° ANGLED MULTI-UNIT			30° ANGLED MULTI-UNIT			PSD ATTACHMENT				
1/1.5 mm	2/2.5 mm	3/3.5 mm	4/4.5 mm	5/5.5 mm	2/2.5 mm	3/3.5 mm	4/4.5 mm	3/3.5 mm	4/4.5 mm	5 mm	1 mm	2 mm	3 mm	4 mm	5 mm
Blue															
•	•	•	•	•	•	•	•	•	•	•	•	•	•	•	•
•	•	•	•	•	•	•	•		•		•		•		•
Blue															
•	•	•	•	•	•	•	•		•		•		•		•
•	•	•	•	•	•	•	•		•		•		•		•
Blue															
•	•	•	•	•	•	•	•	•	•	•	•	•	•	•	•
•	•	•	•	•	•	•	•	•	•	•	•	•	•	•	•
Green															
•	•	•	•	•	•	•	•	•	•	•	•	•	•	•	•
•	•	•	•	•	•	•	•		•		•		•		•
Green															
•	•	•	•	•	•	•	•		•		•		•		•
•	•	•	•	•	•	•	•		•		•		•		•
Brown															
											•		•		
Brown															
•	•	•	•	•	•	•	•	•	•	•	•	•	•	•	•
•	•	•	•	•	•	•	•	•	•	•	•	•	•	•	•
Orange															
•											•	•	•		
Orange															
•	•	•	•					•	•		•	•	•	•	•
•	•	•	•					•	•		•	•	•	•	•
Orange															
•	•	•	•					•	•		•	•	•	•	•
•	•	•	•					•	•		•	•	•	•	•
Brown															
•	•	•	•					•	•		•	•	•	•	•
•	•	•	•					•	•		•	•	•	•	•
Green															
•	•	•	•			•	•	•	•	•	•	•	•	•	•
•	•	•	•			•	•	•	•	•	•	•	•	•	•
Green															
•											•	•	•		
Green															
•	•	•				•			•		•	•	•	•	•
•	•	•				•			•		•	•	•	•	•
Teal															
•	•	•	•	•	•	•	•	•	•	•	•	•	•	•	•
•	•	•	•	•	•	•	•	•	•	•	•	•	•	•	•
Teal															
•	•	•	•	•	•	•	•	•	•	•	•	•	•	•	•
•	•	•	•	•	•	•	•	•	•	•	•	•	•	•	•
Teal															

		SCAN ABUTMENT			ENGAGING CUSTOM TI-BASE				NON-ENGAGING CUSTOM TI-BASE			
		Engaging 10 mm	Engaging 15 mm	Non-Engaging 10 mm	0-1 mm	1-2 mm	2-3 mm	3-4 mm	0-1 mm	1-2 mm	2-3 mm	3-4 mm
HB	MICRODENT® UNIVERSAL™											
	Ø 3.5	•	•	•	•	•	•	•	•	•	•	
	Ø 4.1	•	•	•	•	•	•	•	•	•	•	
	Ø 5.1	•	•	•	•	•	•	•	•	•	•	
IA	XIVE® FRIADENT®											
	Ø 3.4	•	•	•	•	•	•	•	•	•	•	
	Ø 3.8	•	•	•	•	•	•	•	•	•	•	
	Ø 4.5	•	•	•	•	•	•	•	•	•	•	
IB	ANKYLOS®											
	C/X	•	•	•	•	•	•	•	•	•	•	
JA	CAMLOG®											
	Ø 3.3	•	•	•	•	•	•	•	•	•	•	
	Ø 3.8	•	•	•	•	•	•	•	•	•	•	
	Ø 4.3	•	•	•	•	•	•	•	•	•	•	
LB	TAPERED INTERNAL											
	Ø 3.0	•	•	•	•	•	•	•	•	•	•	
	Ø 3.5	•	•	•	•	•	•	•	•	•	•	
	Ø 4.5	•	•	•	•	•	•	•	•	•	•	
	Ø 5.7	•	•	•	•	•	•	•	•	•	•	
MA	OUTLINK®											
	Ø 3.3	•	•	•	•	•	•	•	•	•	•	
	Ø 4.1	•	•	•	•	•	•	•	•	•	•	
	Ø 5.0	•	•	•	•	•	•	•	•	•	•	
MB	PREMIUM™ KOHNO®											
	Ø 3.3	•	•	•	•	•	•	•	•	•	•	
	Ø 3.8	•	•	•	•	•	•	•	•	•	•	
	Ø 4.25	•	•	•	•	•	•	•	•	•	•	
	Ø 5.0	•	•	•	•	•	•	•	•	•	•	
NA	PHIBO® TSH®											
	S2	•	•	•	•	•	•	•	•	•	•	
	S3-S4	•	•	•	•	•	•	•	•	•	•	
	S5	•	•	•	•	•	•	•	•	•	•	
OB	OSSTEM TSIII											
	Ø 3.5	•	•	•	•	•	•	•	•	•	•	
	Ø 4.0	•	•	•	•	•	•	•	•	•	•	
QB	KONTAKT®											
	RP	•	•	•	•	•	•	•	•	•	•	
RB	GRAND MORSE™ GM											
	GM	•	•	•	•	•	•	•	•	•	•	
SB	BEGO® SEMADOS SC/RS											
	Ø 3.25	•	•	•	•	•	•	•	•	•	•	
	Ø 3.75	•	•	•	•	•	•	•	•	•	•	
	Ø 4.1	•	•	•	•	•	•	•	•	•	•	
	Ø 4.5	•	•	•	•	•	•	•	•	•	•	
TA	MIS® SEVEN®											
	Narrow 3.3	•	•	•	•	•	•	•	•	•	•	
	Standard	•	•	•	•	•	•	•	•	•	•	
	Wide	•	•	•	•	•	•	•	•	•	•	
TB	MIS® C1/V3®											
	Standard	•	•	•	•	•	•	•	•	•	•	•
UB	DIO® UFII											
	Ø NP	•	•	•	•	•	•	•	•	•	•	
	Ø RP	•	•	•	•	•	•	•	•	•	•	
WA	ANYONE®											
	RP	•	•	•	•	•	•	•	•	•	•	
WB	ANYRIDGE®											
	Ø 4.0	•	•	•	•	•	•	•	•	•	•	
XA	IMPLANTIUM®/ SUPERLINE™											
	RP	•	•	•	•	•	•	•	•	•	•	
YB	MEDENTIS® ICX											
	RP	•	•	•	•	•	•	•	•	•	•	
	MULTI-UNIT SYSTEM®											
	Ø 4.8	•	•	•	•	•	•	•	•	•	•	

35 countries

around the world







Visit our website



Dental Group

Barcelona, Spain
(+34) 93 278 84 91

info@ipd2004.com

www.ipd2004.com

