

V VARDIS

SWITZERLAND

BIOMIMETIC DENTAL SCIENCE

V VARDIS PROFESSIONAL

Biomimetic technologies for tooth preservation



A disruptive technology with a variety of applications

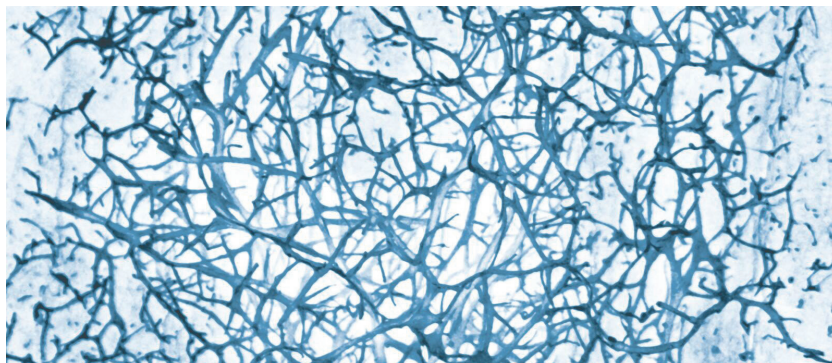
vVARDIS BIOMIMETIC TECHNOLOGY

Nature as a model: During odontogenesis, an enamel matrix enables the ordered growth of hydroxyapatite crystals. Once odontogenesis is complete, the natural matrix is degraded. As a result, enamel cannot regrow or repair itself naturally.

The vVARDIS technology is a peptide-based technology that takes the enamel matrix as its model. Developed at the vVARDIS research centre in Switzerland, this technology has a high affinity for hydroxyapatite and can regenerate enamel by mimicking the natural biological mineralisation process.

This revolutionary, clinically proven, patented, and award-winning technology has many uses:

- In the liquid form, it can provide deep mineralisation of early caries safely, easily and without pain. It can diffuse into carious lesions where it self-assembles to form a three-dimensional biomatrix. This serves as a seed of crystallisation for new hydroxyapatite crystals and as a scaffold for new enamel.
- As a stable, three-dimensional matrix in dental gels, it adheres well to enamel and dentin thanks to the high affinity of the peptide to hydroxyapatite. It forms a stable protective barrier on the tooth surface and - together with fluoride and calcium ions - acts as protection against acids and as a desensitiser.
- In combination with hydroxyapatite, it creates a smooth, bright, and white enamel surface that naturally improves the aesthetic appearance of teeth while protecting the underlying enamel.



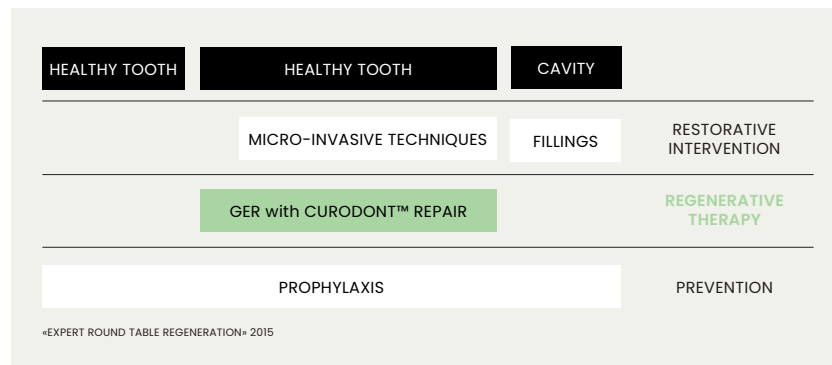
P11-4 nano-fibres (Curodont™) × 120'000.
Picture: A. Aggeli and S. Maude, Leeds

CURODONT™ REPAIR

Guided Enamel Regeneration for initial caries treatment

EASY, SAFE AND PAIN FREE

Guided Enamel Regeneration (GER) is the regenerative treatment of initial caries lesions (tooth decay). GER is the as yet untapped link between prevention and invasive restorative treatments. It enables effective therapy of initial caries, in-depth regeneration of the enamel and leads to the need for fewer restorations. CURODONT™ REPAIR offers all your patients a safe, easy and pain-free solution.



Fluoride varnishes stop approximately 35% of caries lesions after 6 months. CURODONT™ REPAIR stops and regenerates between 80% and 100% of early caries lesions in the same period.¹²

CURODONT™ REPAIR is applied with an easy-to-use applicator onto the cleaned surface of the caries lesion. It forms a biomatrix within the lesion. This biomatrix guides remineralization down to the bottom of the lesion. Calcium and phosphate ions from saliva are attracted to the biomatrix and new hydroxyapatite crystals are formed in the following weeks. The enamel layer is regenerated and the natural tooth is preserved.



New pack design as of April 2022

¹ Alkilizy M. et al. (2017), "Self-assembling Peptide P11-4 and Fluoride for Regenerating Enamel", Journal of Dental Research 1-7.

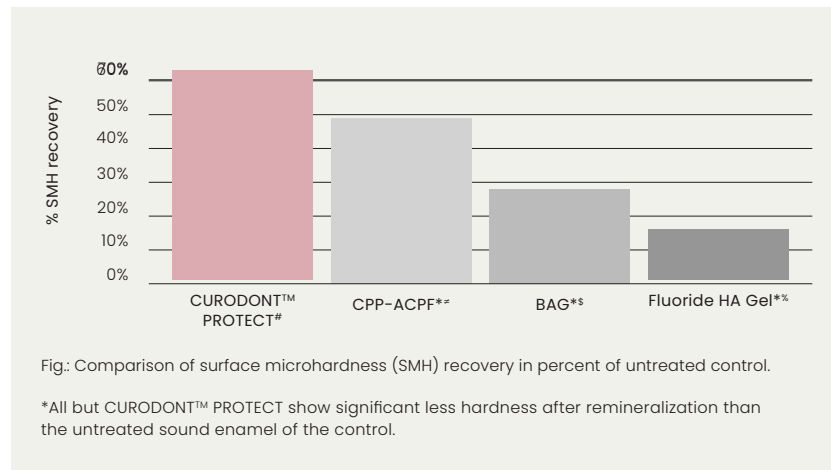
² Doberdoli D. et al. (2020), "Randomized Clinical Trial investigating Self-Assembling Peptide P11-4 for Treatment of Early Occlusal Caries", Scientific Reports 10:4195.

CURODONT™ PROTECT

Protection from caries and erosion in one

THE IDEAL FINISH FOR A PROFESSIONAL CLEANING

CURODONT™ PROTECT is a remineralizing tooth gel with the vVARDIS peptide technology. In combination with calcium, phosphate and fluoride ions, it forms a stable protective layer on the tooth. This mineral-rich layer provides effective and long-lasting protection of enamel and dentine from bacterial and food acids. Thus, it counters the onset of caries, improves enamel hardness and protects the tooth from erosion. It can also stop white spots around orthodontic brackets, as such being an ideal preventive solution for orthodontic patients.



CURODONT™ PROTECT helps prevent the formation of early caries in the enamel around fixed orthodontic appliances, remineralizes the enamel and restores its hardness better than fluoride varnish.^{3,4}

CURODONT™ PROTECT can be directly applied onto the tooth with a finger or with the help of a polishing cup. Simple handling, excellent protection and a unique smooth-tooth sensation makes CURODONT™ PROTECT the perfect finishing touch following professional dental cleaning or a bleaching session.



New pack design as of April 2022

³ Jablonski-Momeni A, Nothelfer R, Morawietz M, Kiesow A, Korbmacher-Steiner H. Impact of self-assembling peptides in remineralisation of artificial early enamel lesions adjacent to orthodontic brackets. Sci Rep. 2020 Sep 15;10(1):15132

⁴ Soares R, De Ataíde IN, Fernandes M, Lambor R. Assessment of Enamel Remineralisation After Treatment with Four Different Remineralising Agents: A Scanning Electron Microscopy (SEM) Study. J Clin Diagn Res. 2017 Apr;11(4):ZC136-ZC141

⁵ Self-Assembling Peptide P11-4 (CURODONT™ PROTECT)

⁶ Casein Phosphopeptide-Amorphous Calcium Phosphate Fluoride (CPP ACPF - GC Tooth Mousse Plus; GC Corporation, Tokyo, Japan)

⁷ Bioactive Glass (BAG- NovaMin (SHY-NM, Group Pharmaceuticals Ltd, India))

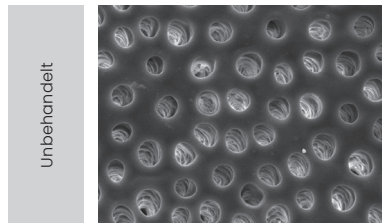
⁸ Fluoride enhanced Hydroxyapatite Gel (Remin-Pro (VOCO-GmbH, Germany))

CURODONT™ D'SENZ

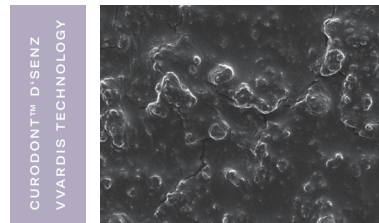
Desensitizes and protects hypersensitive teeth

FAST ACTION

CURODONT™ D'SENZ is a desensitizing tooth gel. The biomatrix, based on the vVARDIS TECHNOLOGY, swiftly forms a stable protective barrier on the exposed dentine. It takes 2 minutes for the open dentinal tubules to be effectively occluded inhibiting the transmission pain-inducing thermal and contact stimuli.



Exposed dentine with open tubules



Dentine with CURODONT™ D'SENZ – a stable protective barrier has formed after a single application.

CURODONT™ D'SENZ gives fast and easy recovery from sensitive teeth helping to effectively reduce pain for over 81% of all users.⁵ An intensive cure ensures long-lasting protection.⁵

The fast desensitization and simple application makes CURODONT™ D'SENZ the ideal product for use before professional dental cleaning, ensuring a more pleasant treatment for both patient and hygienist. The repeated application at home by the patient leads to a long-lasting desensitization.



New pack design as of April 2022

⁵ Schlee, M., Rathe, F., Bommer, C., Bröseler, F., & Kind, L. (2018). Self-assembling peptide matrix for treatment of dentin hypersensitivity: A randomized controlled clinical trial. *Journal of Periodontology*, 89(6), 653–660.

Indications

CURODONT™ REPAIR

Guided Enamel Regeneration for initial caries

	CURODONT™ REPAIR VWARDIS TECHNOLOGY
	CARIES THERAPY
PROXIMAL CARIES D1, D2, (D3)	●
OCCLUSAL CARIES	●
BUCCAL CARIES	●
PRIMARY TOOTH CARIES	●

Application:

Only use CURODONT™ REPAIR after dental hygiene cleaning.

- Removal of the organic pellicle with sodium hypochlorite 1–3 %, 20 sec.
- Etching with 35–37% phosphoric acid gel, 20 sec.
- Rinse and air dry
- Application of CURODONT™ REPAIR on the carious site, 5 min.

CURODONT™ PROTECT | CURODONT™ D'SENZ

Effective Protection and Desensitization

	CURODONT™ PROTECT VWARDIS TECHNOLOGY	CURODONT™ D'SENZ VWARDIS TECHNOLOGY		
CARIES PREVENTION	APPLICATION	APPLICATION		
AFTER DENTAL HYGIENE CLEANING	●			
HIGH RISK CARIES PATIENTS	ONCE OR TWICE PER WEEK			
DURING ORTHODONTIC TREATMENT	ONCE OR TWICE PER WEEK			
INVISALIGN THERAPY	ONCE OR TWICE PER WEEK			
XEROSTOMIA	ONCE OR TWICE PER WEEK			
EROSION	REGULARY - DEPENDING ON SEVERITY			
DENTINE HYPERSENSITIVITY				
EXPOSED ROOTS		ONE TO MULTIPLE USE DAILY UNTIL DESENSITISATION SUCCESSFUL		
BEFORE PROFESSIONAL CLEANING		●		
BLEACHING				
IN-OFFICE BLEACHING, HYPERSENSITIVITY		AFTER BLEACHING		
IN-OFFICE BLEACHING, EROSION PROTECTION	AFTER EACH BLEACHING			
HOME BLEACHING, HYPERSENSITIVITY		ON THE PAINFUL SITE		
IN OFFICE				
BEFORE THE VISIT	TREATMENT	ORTHODONTIC	PROPHYLACTIC	AT HOME
CURODONT™ D'SENZ	CURODONT™ REPAIR	CURODONT™ PROTECT	CURODONT™ PROTECT	CURODONT™ PROTECT
			CURODONT™ D'SENZ	CURODONT™ D'SENZ

Are you interested? Learn more on professional.vvardis.com

vVARDIS

White Enamel Serum

INTENSIVE TREATMENT FOR THE ENAMEL

The vVARDIS Serum is a one-week intensive treatment which restores a layer of new, white enamel while simultaneously protecting and strengthening teeth. The peroxide-free Hydroxya-Peptide 500 patented formula in highest concentration combines the original biomimetic vVARDIS technology with hydroxyapatite. The Serum covers superficial irregularities and naturally brightens the enamel without causing sensitivity or gum irritation. It works on natural teeth as well as crowns, fillings and ceramic veneers. Without fluoride.

The vVARDIS White Enamel Serum showed significant and visible whitening after one application, increasing throughout the first week of home application and remaining stable for 30 days.⁶

UNIQUE BENEFITS

- Protects and nourishes the enamel
- Effective and gentle whitening without attacking the enamel
- Does not cause sensitivity or gum irritation
- Easy and fast application (3 minutes)
- Silky-smooth feeling on teeth
- Makes white and yellow spots less visible
- Visible brightening of fillings, porcelain crowns and veneers
- Protects from stains
- Helps reduce teeth sensitivity
- Suitable also for teenagers
- Vegan, clean, sustainable



HOW TO USE

For instructions on how to use it, please visit vvardis.com:



⁶Bommer C, Flessa HP, Xu X, Kunzelmann KH. Hydroxyapatite and self-assembling peptide matrix for non-oxidizing tooth whitening. J Clin Dent 2018;29(2):57-63

V VARDIS

SWITZERLAND

BIOMIMETIC DENTAL SCIENCE

Rejuvenate
Repair
Whiten
Enamel



Creating tooth enamel the way nature does

Founded by renowned Swiss dentists Dr. Haleh and Dr. Golnar Abivardi, vVARDIS is the company behind the science of **regenerating tooth enamel the way nature does.**

vVARDIS unites science and nature. Our innovative technology and products were developed in the vVARDIS research centre in Switzerland and are produced with high-quality **Swiss ingredients.** Sustainable. Clean. Vegan.





The **patented and breakthrough vVARDIS technologies** mimic nature to **regenerate, strengthen, and protect tooth enamel** in an **innovative and unique manner**.

These technologies are featured in two lines of products: the professional line, for use by dental professionals, and the vVARDIS oral care line for daily use at home.

vVARDIS

SWITZERLAND

When technology meets nature: the science behind our products.



At the base of vVARDIS is the **clinically proven Monomer-Peptide 10⁴ technology**, among the greatest scientific discoveries in the field of dentistry.

Scientifically proven in more than 200 studies, this innovative technology can generate new enamel in the same way that nature first does when creating teeth.

Our versatile technology **treats early decay, without drilling or pain**, by acting within the tooth to regenerate the lost enamel. Clinical evidence demonstrates that it works better than standard treatments using fluoride varnishes alone ¹⁻².

In German-speaking countries alone, about 60,000 cases of early decay have been successfully treated with the vVARDIS technology.

Originally developed for dental professionals, this drill-free technology **has now also been instilled in the vVARDIS oral care line for daily use** after being enriched with the natural tooth mineral, hydroxyapatite.

The combination of these two components, the **patented Hydroxya-Peptide technology**, rejuvenates teeth with new white enamel day after day on regular use. The teeth are instantly coated with a noticeable smooth layer and are **protected against decay, erosion, staining, and sensitivity**. Additionally, they also appear whiter, shinier and younger.



1 - Alkilzy M. et al. (2017), Journal of Dental Research 1-7.
2 - Doberdoli D. et al. (2020), Scientific Reports 10:4195

vVARDIS Set



The vVARDIS Set contains everything you need for a **complete, revitalizing oral care ritual**.

It creates new white enamel, strengthens and repairs it day after day, and does all this without causing sensitivity or irritating the gums.

Additionally it ensures a fresh breath as well as bright and shiny teeth.

Feel your silky, smooth new white tooth enamel, shielding your teeth everyday.

Swiss-made, vegan and sustainable.



Rejuvenates the Enamel



Works on fillings, etc.



Protect against acid erosion



Anti-caries



Remineralizes the Enamel



Also for braces and retainers



Protects against discolouration



For ages 6 and up



Clean Beauty and sustainability



Vegan

vWARDIS Serum

Aletsch

vWARDIS Aletsch contains **the highest concentration of the Hydroxya-Peptide technology** among our daily use oral care products. Aletsch is a **one-week intensive treatment for your teeth**, which creates a layer of **new, white tooth enamel** while simultaneously protecting and strengthening your teeth.

The concentrated **peroxide-free formula** covers all superficial imperfections and brightens teeth by natural means **without causing sensitivity or gum irritation**. vWARDIS Aletsch works on natural teeth as well as crowns, fillings and veneers. Our serum is **equally suitable for teenagers**.
Without fluoride.



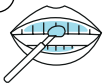
Instructions for use

1



For best results, use just before bedtime.

3



Using the included applicator brush, apply a thick layer of New White Enamel Anti-Aging Serum to each tooth (included porcelain crowns and veneers), extending the gel over your gum line.

5



Avoid eating or drinking for at least 30 minutes after application.

2



After brushing, use your fingers to gently draw back your lips to reveal your teeth. Lightly dry your teeth with a soft cloth.

4



After applying, keep your lips open for 10-15 seconds. For maximum benefit, don't rinse the New White Enamel Anti-Aging Serum from your teeth and gums.

6



Apply the New White Enamel Anti-Aging Serum for a week and repeat treatment after 1-3 months to maintain results.

vVARDIS

Toothpaste

Edelweiss

Enriched with Edelweiss extracts, known for its antioxidants benefits, this innovative toothpaste **rejuvenates and brightens your tooth enamel day after day**. Thanks to the drill-free vVARDIS technology, **teeth are strengthened and protected from decay, erosion and sensitivity**.

Additionally, they become **smoother, brighter and more resistant to staining**.

Sustainable toothpaste tubes made from the sawdust from carpenters and packaging from FSC-certified wood.

Available in Soft Mint and Strong Mint.





vVARDIS

Mouthwash

Weissbad

Refreshes your breath and lends your teeth a **smooth feeling and shining appearance**. Its Zinc-Peptide 20 technology protects against tooth decay, enamel erosion, staining and gum problems.

Without alcohol.

Sustainable packaging made from recyclable glass and aluminium.
Available in Soft Mint and Strong Mint.

vVARDIS Toothbrush

Rheinholz

The sustainable, FSC certified, wooden toothbrush features an effective and ergonomic design.

It **gently and effectively cleans** thanks to its **scientifically developed soft bristles**, which can **penetrate interdental spaces 10x better** than a regular toothbrush.

Made from sustainably sourced Swiss beech wood.

Every toothbrush is numbered and can be traced back to its source tree.



The unique vVARDIS technologies

- Developed over 20 years
- Researched in over 200 scientific studies
- Used by dental professionals since 10 years
- Almost 60,000 initial decay lesions successfully treated in German-speaking countries alone
- More effective than fluoride varnish or fluoride gels alone for the treatment of early tooth decay ¹⁻²
- Sustainable, clean and vegan
- Developed and produced in Switzerland



Developed with
dentists



Supported by
science



Over 200
studies



Vegan



Clean Beauty and
sustainability



Produced in
Switzerland



Distinguished
Swiss technology

1 - Alkilzy M. et al. (2017), Journal of Dental Research 1-7.
2 - Doberdoli D. et al. (2020), Scientific Reports 10:4195

Your daily
oral care ritual.
Reinvented



V VARDIS
SWITZERLAND

BIOMIMETIC DENTAL SCIENCE

v VARDIS

SWITZERLAND

BIOMIMETIC DENTAL SCIENCE

CURODONT™ REPAIR

Guided Enamel Regeneration for the treatment of initial caries

Guided Enamel Regeneration für die Behandlung von Initialkaries

Régénération guidée de l'émail pour le traitement des débuts de caries

Rigenerazione guidata dello smalto per il trattamento delle lesioni cariose iniziali



CURODONT™ REPAIR from vVARDIS is the first biomimetic system for the treatment of initial caries by enamel regeneration:

- Patented, clinically proven *Monomer-Peptide 10* technology
- Initiates enamel regeneration at the depth of the lesion
- Between 86% to 100% inactivation and regression of initial carious lesions
- Non-invasive, painless and easy to use
- Suitable for all patients, including children

CURODONT™ REPAIR von vVARDIS ist das erste biomimetische System zur Behandlung früher Kariesläsionen durch Regeneration des Zahnschmelzes:

- Patentierte, klinisch-bestätigte *Monomer-Peptid* Technologie
- Leitet eine Zahnschmelzregeneration in der Tiefe der Läsion ein
- Zwischen 86% und 100% Inaktivierung und Regression der frühen Kariesläsionen
- Nichtinvasive, schmerzlose und einfache Anwendung
- Geeignet für alle Patienten, inklusive Kinder

Fabriqué par vVARDIS, CURODONT™ REPAIR est le premier système biomimétique pour le traitement des débuts de caries par régénération de l'émail:

- Technologie *Monomère-Peptide 10* brevetée et validée par la pratique clinique
- Amorce la régénération de l'émail dans la profondeur de la lésion
- Entre 86% et 100% d'inactivation et de régression des lésions carieuses initiales
- Non invasif, indolore et facile à utiliser
- Convient à tous les patients, y compris aux enfants

vVARDIS CURODONT™ REPAIR è il primo sistema biomimetico per il trattamento delle lesioni cariose iniziali attraverso la rigenerazione guidata dello smalto:

- Tecnologia brevettata e clinicamente testata: *Monomer-Peptide 10*
- Permette la rigenerazione dello smalto a partire dalla profondità della lesione
- Rende possibile l'inattivazione tra l'86% e il 100% delle lesioni cariose iniziali
- Non invasivo, indolore ed estremamente facile da usare
- Adatto ai pazienti di ogni età, compresi i bambini

C210213

professional.vardis.com

APPLICATION (5-8 MINUTES)

Treatment by dental hygienist or dentist

- Professional tooth cleaning
- Cleaning of the affected tooth surface with 2% sodium hypochlorite for 20 sec.
- Application of 35-37% orthophosphoric acid to the area in question for 20 sec.
- Rinse and dry gently
- Application of CURODONT™ REPAIR

Behandlung von DH oder ZaZ

- Professionelle Zahnreinigung
- Reinigen mit Natriumhypochlorit 2% der betroffenen Zahnoberfläche (20 Sek)
- Schmelzätzung mit Phosphorsäuregel 35% (20 Sek.)
- Spülen und trocknen
- CURODONT™ REPAIR auftragen

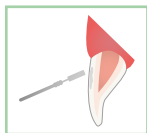
Traitement par une hygiéniste dentaire ou une dentiste

- Nettoyage professionnel des dents
- Nettoyage de la surface de la dent affectée avec de l'hypochlorite de sodium à 2 % pendant 20 sec.
- Application d'acide orthophosphorique à 35 % pendant 20 sec.
- Rinçage et séchage
- Application de CURODONT™ REPAIR

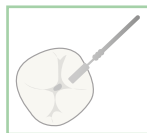
Trattamento effettuato da un'igienista dentale o un dentista

- Pulizia professionale del dente interessato
- Trattamento della superficie interessata con ipoclorito di sodio al 2% per 20 sec.
- Applicazione di acido ortofosforico al 35-37% sull'area interessata per 20 sec.
- Risciacquo e leggera asciugatura
- Applicazione di CURODONT™ REPAIR

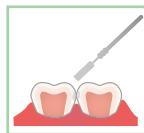
INDICATIONS



Buccal/Lingual Caries



Occlusal Caries



Interproximal Caries

1 applicator of CURODONT™ REPAIR can treat up to 1-3 initial carious lesions

- Initial approximal caries D1, D2, (D3, non-cavitated)
- Initial occlusal caries
- Initial smooth surface caries
- Initial caries in deciduous teeth

1 Applikation von CURODONT™ REPAIR kann 1-3 frühe Kariesläsionen behandeln

- Initiale Approximalkaries D1, D2, (D3, nicht kavitiert)
- Initiale Okklusalkaries
- Glattflächenkaries
- Initiale Milchzahnkaries

1 applicateur de CURODONT™ REPAIR permet de traiter entre 1 et 3 débuts de lésions carieuses

- Début de carie approximale D1, D2, (D3 sans cavitation)
- Début de carie occlusale
- Début de carie de surface lisse
- Début de carie de dent de lait

Un'applicazione di CURODONT™ REPAIR può trattare da 1 a 3 lesioni cariose iniziali

- Lesioni approssimali iniziali D1, D2, (D3, non cavitata)
- Lesioni occlusali iniziali
- Lesioni iniziali della superficie
- Lesioni iniziali nei denti decidui

PRECAUTIONS

CURODONT™ REPAIR should only be used by dental professionals

CURODONT™ REPAIR darf nur durch Fachpersonal verwendet werden

CURODONT™ REPAIR ne doit être utilisé que par des professionnels

CURODONT™ REPAIR deve essere utilizzato esclusivamente da personale qualificato

V VARDIS

SWITZERLAND

BIOMIMETIC DENTAL SCIENCE

CURODONT™ PROTECT

Professional gel for caries prophylaxis and erosion protection

Professionelles Gel zur
Kariesprophylaxe und zum
Erosionsschutz

Gel professionnel pour la
prophylaxie des caries et la
protection contre l'érosion

Gel professionale per la
profilassi della carie e la
protezione dall'erosione



The biomimetic VWARDIS TECHNOLOGY in CURODONT™ PROTECT forms, together with fluoride and calcium phosphate, a noticeably smooth, highly effective protective layer on the teeth. CURODONT™ PROTECT keeps the teeth healthy and in good condition.

- Remineralises and strengthens the enamel
- Long lasting acid protection for enamel and dentin
- Noticeable smooth and shiny teeth

Die biomimetische VWARDIS TECHNOLOGIE in CURODONT™ PROTECT bildet zusammen mit Fluorid und Calciumphosphat eine spürbar glatte, hochwirksame Schutzschicht auf den Zähnen. CURODONT™ PROTECT hält die Zähne gesund und in gutem Zustand.

- Remineralisiert und stärkt den Zahnschmelz
- Langanhaltender Säureschutz für Zahnschmelz und Dentin
- Spürbar glatte und glänzende Zähne

La TECHNOLOGIE biomimétique VWARDIS de CURODONT™ PROTECT forme, avec le fluorure et le phosphate de calcium, une couche protectrice sur les dents, qui les rend visiblement lisse et efficacement protégée. CURODONT™ PROTECT maintient les dents saines et en bonne santé.

- Reminéralise et renforce l'émail
- Protection longue durée de l'émail et la dentine contre les attaques acides
- Des dents remarquablement lisses et brillantes

La TECNOLOGIA biomimetica VWARDIS di CURODONT™ PROTECT forma, insieme al fluoro e al fosfato di calcio, un strato protettivo sui denti che li rende lisci ed efficacemente protetti. CURODONT™ PROTECT mantiene i denti sani e in buone condizioni.

- Remineralizza e rafforza lo smalto
- Protezione acida di lunga durata per smalto e dentina
- Denti notevolmente lisci e brillanti

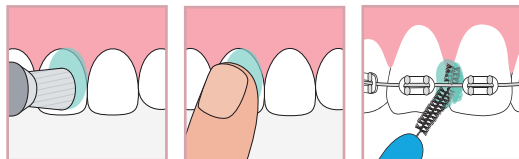
INSTRUCTIONS

In the dental office

CURODONT™ PROTECT is applied by the dental hygienist or the dentist with a rubber polisher or a micro brush for optimal completion of the professional tooth cleaning treatment or after bleaching.

At Home

2x per week after daily oral hygiene. Leave on for 1-2 minutes. Spit out residues, if necessary, apply with the finger or an inter-dental brush.



In der Zahnarztpraxis

CURODONT™ PROTECT wird von der Dentalhygienikerin oder dem Zahnarzt zum optimalen Abschluss der professionellen Zahnreinigung oder nach dem Bleaching mit einem Gummipolierer oder einer Mikrobürste aufgetragen.

Zu Hause

2x pro Woche nach der täglichen Mundhygiene. 1-2 Minuten einwirken lassen. Rückstände ggf. ausspucken, mit dem Finger oder einer Interdentalbürste auftragen.

Dans le cabinet dentaire

CURODONT™ PROTECT est appliqué par l'hygiéniste dentaire ou le dentiste avec une gomme de polissage ou une micro-brosse.

À la maison

2x par semaine après l'hygiène orale quotidienne. Laisser agir 1-2 minutes. Cracher les restes si nécessaire. Appliquer avec le doigt ou une brosse interdentaire.

Nello studio dentistico

CURODONT™ PROTECT viene applicato dall'igienista dentale o dal dentista con un lucidatore o con un microspazzolino a completamento della pulizia dentale professionale o dopo il bleaching.

A casa

2 volte alla settimana dopo l'igiene orale quotidiana. Lasciare agire per 1-2 minuti. Sputare i residui, se necessario. Applicare con il dito o con uno spazzolino interdentale.

INGREDIENT LIST

Hydrogenated Starch Hydrolysate, Aqua, Hydrated Silica, PEG-8, Cellulose Gum, Sodium Monofluorophosphate, Aroma, Sodium Saccharin, Citric Acid, Sodium Hydroxide, Dicalcium Phosphate, Oligopeptide-104, Calcium Glycerophosphate, Sodium Chloride, Sodium Sulfate, Limonene, Cinnamal, CI 42090

CONTENT

Contains Sodium monofluorophosphate (900 ppm F⁻)

Enthält
Natriummonofluorophosphat
(900 ppm F⁻)

Contient du
monofluorophosphate de
sodium (900 ppm F⁻)

Contiene Monofluorofosfato
di sodio
(900 ppm F⁻)

WARNING

Not for children under 6 years of age

Nicht für Kinder
unter 6 Jahren
geeignet

Ne convient pas
aux enfants de
moins de 6 ans

Non adatto per
bambini di età
inferiore ai 6 anni

v VARDIS

SWITZERLAND

BIOMIMETIC DENTAL SCIENCE

CURODONT™ D'SENZ

Professional protection for sensitive teeth

Professioneller Schutz für empfindliche Zähne

Protezione professionale per i denti sensibili

Protection professionnelle pour les dents sensibles



CURODONT™ D'SENZ keeps the teeth healthy and in good condition. The vVARDIS TECHNOLOGY in CURODONT™ D'SENZ forms a highly effective protective barrier on the teeth. Professional protection for sensitive teeth.

CURODONT™ D'SENZ hält die Zähne gesund und in gutem Zustand. Die vVARDIS TECHNOLOGIE in CURODONT™ D'SENZ bildet eine hochwirksame Schutzbarriere auf den Zähnen. Professioneller Schutz für empfindliche Zähne.

CURODONT™ D'SENZ maintient les dents en bonne santé et en bon état. La TECHNOLOGIE vVARDIS de CURODONT™ D'SENZ forme une barrière protectrice très efficace sur les dents. Protection professionnelle pour les dents sensibles.

CURODONT™ D'SENZ mantiene i denti sani e in buone condizioni. La TECNOLOGIA vVARDIS de CURDONT™ D'SENZ forma una barriera protettiva molto efficace sui denti. Protezione professionale per i denti sensibili.

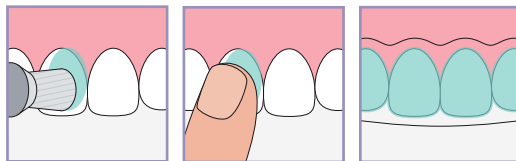
INSTRUCTIONS

In the dental office

CURODONT™ D'SENZ is applied by the dental hygienist or the dentist with a rubber polisher or a micro brush.

At home

Apply with the finger or an inter-dental brush. Leave on for 1-2 minutes. Spit out residues, if necessary.



In der Zahnarztpraxis

CURODONT™ D'SENZ wird von der Dentalhygienikerin oder dem Zahnarzt mit einem Gummipolierer oder einer Mikrobürste aufgetragen.

Zu Hause

Mit dem Finger oder einer Interdentalbürste auftragen. 1-2 Minuten einwirken lassen. Rückstände ggf. ausspucken.

Dans le cabinet dentaire

CURODONT™ D'SENZ est appliqué par l'hygiéniste dentaire ou le dentiste avec une gomme de polissage ou une micro-brosse.

À la maison

Appliquer avec le doigt ou une brosse interdentaire. Laisser agir 1 à 2 minutes. Cracher les restes si nécessaire.

Nello studio dentistico

CURODONT™ PROTECT viene applicato dall'igienista dentale o dal dentista con un lucidatore o con un microspazzolino.

A casa

Applicare con il dito o con uno spazzolino interdentale. Lasciare agire per 1-2 minuti. Sputare i residui, se necessario.

INGREDIENT LIST

Ingredients: Hydrogenated Starch Hydrolysate, Aqua, Hydrated Silica, PEG-8, Cellulose Gum, Sodium Monofluorophosphate, Aroma, Sodium Saccharin, Citric Acid, Sodium Hydroxide, Dicalcium Phosphate, Oligopeptide-104, Calcium Glycerophosphate, Limonene, Cinnamal

CONTENT

Contains Sodium monofluorophosphate (900 ppm F⁻)

Enthält
Natriummonofluorophosphat
(900 ppm F⁻)

Contient du
monofluorophosphate de
sodium (900 ppm F⁻)

Contiene Monofluorofosfato
di sodio
(900 ppm F⁻)

WARNING

Not for children under 6 years of age

Nicht für Kinder
unter 6 Jahren
geeignet

Ne convient pas
aux enfants de
moins de 6 ans

Non adatto per
bambini di età
inferiore ai 6 anni